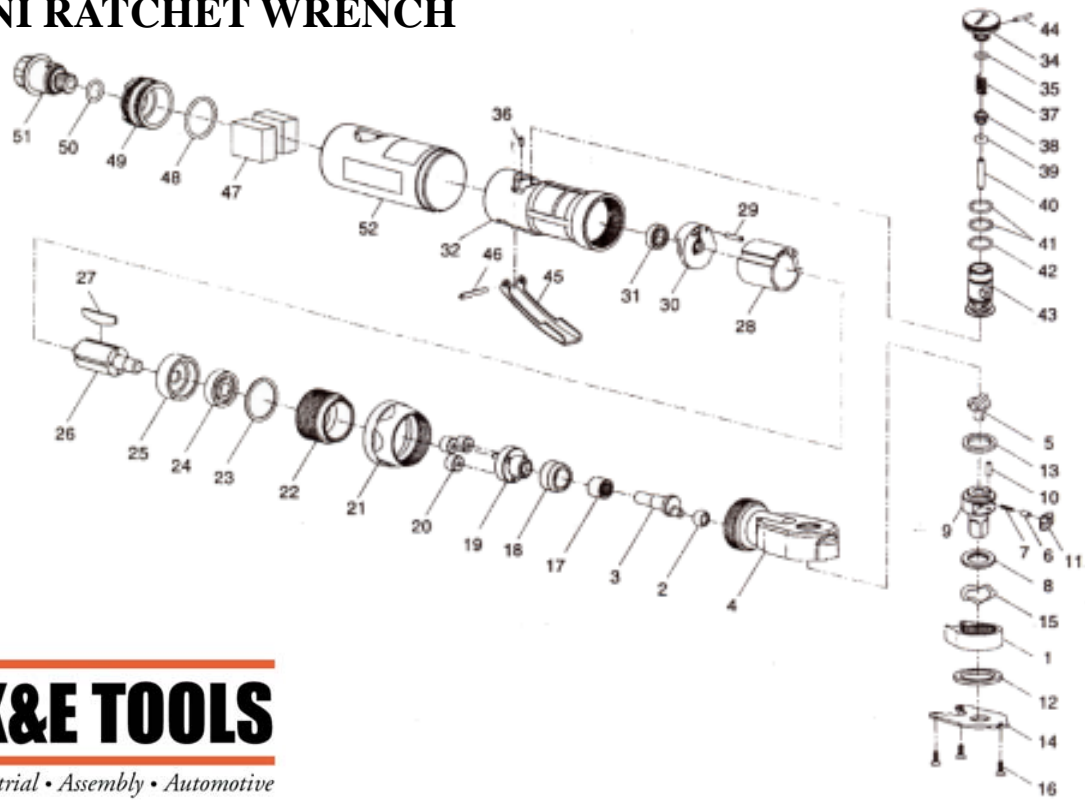


KE-1164 & KE-1165

1/4" & 3/8" MINI RATCHET WRENCH



INDEX #	PART #	DESCRIPTION	QTY	INDEX #	PART #	DESCRIPTION	QTY
1	1164-01	RATCHET YOKE	1	27	1164-27	ROTOR BLADE	4
2	1164-02	DRIVE BUSHING	1	28	1164-28	CYLINDER	1
3	1164-03	CRANK SHAFT	1	29	1164-29	SPRING PIN	1
4	1164-04	RATCHET HOUSING	1	30	1164-30	REAR END PLATE	1
5	1164-05	1/4" REVERSE BUTTON	1	31	1164-31	BALL BEARING	1
5	1165-05	3/8" REVERSE BUTTON	1	32	1164-32	MOTOR HOUSING	1
6	1164-06	LOCK PIN	1	34	1164-34	REGULATOR DIAL	1
7	1164-07	RATCHET SPRING	1	35	S-6	O-RING	1
8	1164-08	1/4" THRUST WASHER	1	36	SP2.5X5	SPRING PIN	1
8	1165-08	3/8" THRUST WASHER	1	37	1164-37	VALVE SPRING	1
9	1164-09	1/4" ANVIL	1	38	1164-38	THROTTLE VALVE	1
9	1165-09	3/8" ANVIL	1	39	1164-39	O-RING	1
10	1164-10	DOWEL PIN	1	40	1164-40	VALVE SHAFT	1
11	1164-11	RATCHET PAWL	1	41	S-12	O-RING	2
12	1164-12	COLLAR	1	42	S-12.5	O-RING	1
13	1164-13	COVER PLATE BUSHING	1	43	1164-43	AIR REGULATOR	1
14	1164-14	COVER PLATE	1	44	SP2.5X12	SPRING PIN	1
15	1164-15	SPRING WASHER	1	45	1164-45	THROTTLE LEVER	1
16	1164-16	TORX SCREW	3	46	SP3X22	SPRING PIN	1
17	1164-17	NEEDLE BEARING	1	47	1164-47	SPONGE	2
18	1164-18	SPINDLE BUSHING	1	48	S-22.4	O-RING	1
19	1164-19	PLANET CAGE W/ PIN	1	49	1164-49	EXHAUST SLEEVE	1
20	1164-20	IDLE GEAR	3	50	P-10	O-RING	1
21	1164-21	COUPLING NUT	1	51	1164-51	SWIVEL INLET BUSHING	1
22	1164-22	INTERNAL GEAR	1	52	1164-52	HOUSING COVER	1
23	1164-23	LOCK WASHER	1				
24	1164-24	BALL BEARING	1				
25	1164-25	FRONT END PLATE	1				
26	1164-26	ROTOR	1				

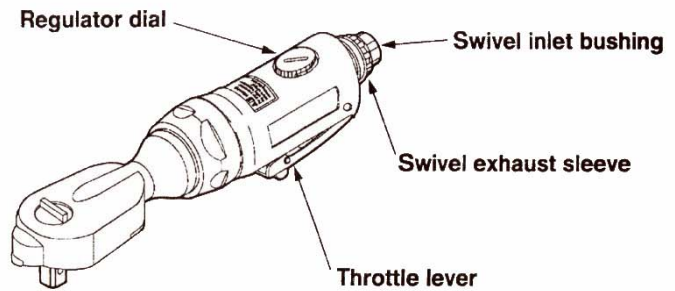


10721 S. WESTERN AVE. CHICAGO, IL 60643-3135
 TOLL FREE 800-235-1782 FAX 773-779-0231
 WWW.KETOOLS.COM

KE-1164 & KE-1165 1/4" & 3/8" MINI RATCHET WRENCH

INFORMATION
 FOR THE

1/4" SQ. DR. MINI-RATCHET WRENCH
 3/8" SQ. DR. MINI-RATCHET WRENCH



USAGE

	CAUTION Do not use any liquids with a high percentage of alkaline or acid when cleaning tool.
	CAUTION Read safety instructions before use / maintenance.
	CAUTION Operate this tool under rated free speed.

	CAUTION Recommended air pressure 6.3 bar / 90 psi.
	CAUTION Avoid prolonged exposure to vibration. Prolonged exposure to vibration can cause injury.
	Adjust the exhaust sleeve so that air flow is directed away from the operator.

	Oil tool daily with SAE-10W or it's equivalent.
	Adjust regulator dial to set the desired speed between the "HI"(high speed) mark and "Lo" (low speed) mark.