

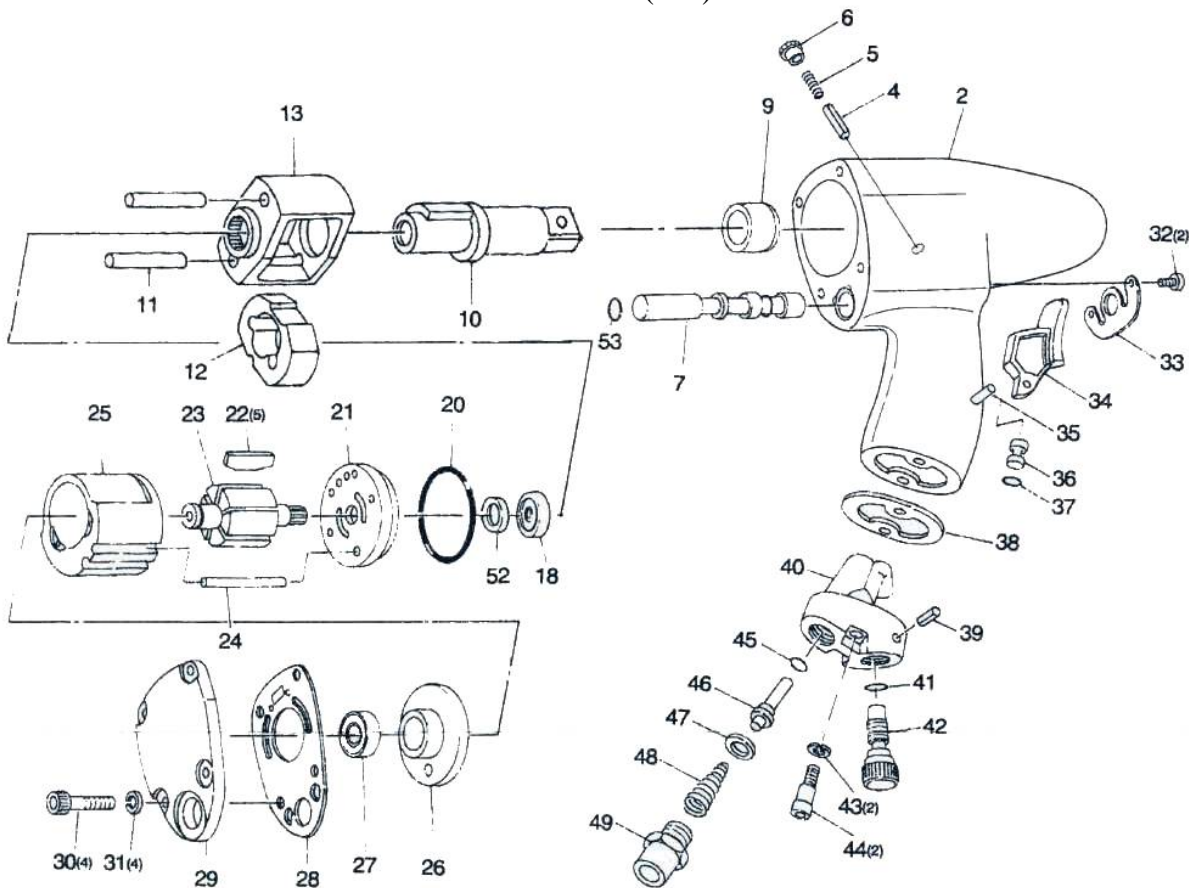
1/4" MINI IMPACT WRENCH



K&E TOOLS

Industrial • Assembly • Automotive

Div of Railhead Corp.
10721 S. Western Ave.
Chicago, IL 60643-3135
800-235-1782 Fax (773) 779-0231



INDEX NO.	PARTS NO.	DESCRIPTION	QTY. / TOOL
2	826S02	MOTOR HOUSING	1
4	826S04	REVERSE VALVE PIN	1
5	826S05	REVERSE VALVE SPRING	1
6	826S06	SET SCREW	1
7	826S07	REVERSE VALVE	1
9	826S09	HOUSING BUSHING	1
10	826S10	ANVIL 1/4"	1
11	826S11	HAMMER PIN	2
12	826S12	HAMMER	1
13	826S13	HAMMER FRAME	1
18	826S18	BALL BEARING(608)	1
20	826S20	O RING	1
21	826S21	FRONT END PLATE	1
22	826S22	ROTOR BLADE	5
23	826S23	ROTOR	1
24	826S24	MOTOR PIN	1
25	826S25	CYLINDER	1
26	826S26	REAR END PLATE	1
27	826S27	BALL BEARING(626)	1
28	826S28	GASKET	1
29	826S29	HEAD COVER	1
30	826S30	CAP SCREW	4
31	826S31	SPRING WSHR	4
32	826S32	SCREW	2
33	826S33	EXHAUST COVER	1

INDEX NO.	PARTS NO.	DESCRIPTION	QTY. / TOOL
34	826S34	TRIGGER	1
35	826S35	ROLL PIN	1
36	826S36	PUSH PIN	1
37	826S37	O RING	1
38	826S38	VALVE CASE GASKET	1
39	826S39	ROLL PIN	1
40	826S40	VALVE CASE	1
41	826S41	O RING	1
42	826S42	REGULATOR VALVE	1
43	826S43	SPRING WSHR	2
44	826S44	CAP SCREW	2
45	826S45	O RING	1
46	826S46	THROTTLE VALVE	1
47	826S47	O RING RETAINER	1
48	826S48	THROTTLE VALVE SPRING	1
49	826S49	INLET BUSHING	1
52	826S52	OIL SEAL	1
53	826S53	O RING	1

The name and specifications may be changed without notice.



Division of Railhead Corporation
 10721 S. Western Ave. ~ Chicago, IL 60643-3135
 Phone 773-779-2400 ~ Fax 773-779-0231
www.ketools.com

MODEL KE-50
1/4" Square Drive Impact Wrench
JUMBO HAMMER



SPECIFICATIONS:

Bolt capacity.....3/8"
 Working Torque.....5 - 30 ft. lbs
 Maximum Torque.....50 ft. lbs.
 Speed.....16,000 R.P.M.
 Impacts per minute1800
 Weight.....1 1/2 lbs.
 Length.....4 3/4"
 Hose Size3/8"
 Air consumption.....2 C.F.M.
 Air inlet thread size.....1/4" N.P.T.
 Air pressure.....88 P.S.I.

IMPORTANT:
OIL DAILY. FIRST IN THE
MORNING AND JUST BEFORE
END OF DAY. USE A GOOD
GRADE SPINDLE OIL OR
SPECIAL AIR MOTOR OIL.

OPERATING & MAINTENANCE:

1. Use of filter and lubricator assembly is recommended to insure proper functioning and long life.
2. The grease in the impact mechanism should be changed after every 40 hours of operation.
3. Before starting tool in operation, blow hose out prior to attaching to the tool to prevent dirt and water from entering tool.
4. If a bolt or nut can not be loosened or tightened to proper torque after five seconds of impacting, a larger size wrench is needed for the job. This is an indication of:
 - a. Low air pressure or volume.
 - b. Improper application of wrench.
 - c. Worn out socket.
5. Do not use sockets that are too large for the capacity of the tool. This will wear or break the square drive spindle prematurely.
6. Check rotor blades for wear in the event the tool is gradually losing power and all other operating conditions are proper.