

# KW-5000G

## 1 1/2" N-CLUTCH IMPACT WRENCH



DIVISION OF RAILHEAD CORPORATION  
10721 S. WESTERN AVENUE  
CHICAGO, IL 60643-3135  
800-235-1782 FAX 773-779-0231

### Specifications

BOLT CAPACITY	1 1/2"
WORKING TORQUE	740-2580 FT. LBS.
MAX. TORQUE	3000-3400 FT. LBS.
IMPACTS PER MINUTE	600
SPEED	3000 RPM
WEIGHT	35.2 LBS
LENGTH	18 15/16"
AIR CONSUMPTION	29.2 CFM
HOSE SIZE	1/2"
AIR INLET THREAD SIZE	3/8"

**AIR PRESSURE**

**90 P.S.I.**

### Operating & Maintenance:

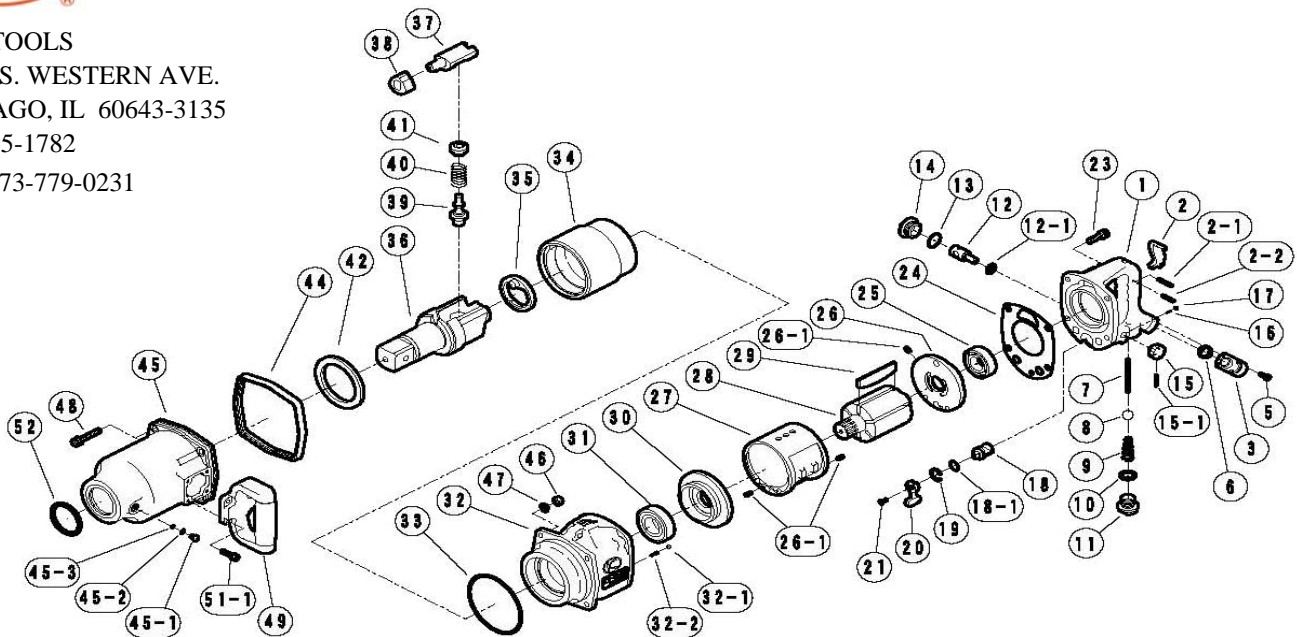
1. Use of filter and lubricator assembly is recommended to insure proper functioning and long life.
2. The grease in the impact mechanism should be changed after every 40 hours of operation.
3. Before starting tool in operation each day, blow hose out prior to attaching to tool to prevent dirt and water from entering tool.
4. If a bolt or nut cannot be loosened or tightened to proper torque after five seconds of impacting, a larger size wrench is needed for the job. This is an indication of:
  - a. low air pressure or volume
  - b. Improper application of wrench\
  - c. Worn out socket
5. Do not use sockets that are too large for the capacity of the tool. This will wear or break the square drive spindle prematurely.
6. Check rotor blades for wear in the event that the tool is gradually losing power and all other operating conditions are proper.

# KW-5000G 1 1/2" SQ. DR. HEAVY DUTY IMPACT WRENCH



K&E TOOLS  
10721 S. WESTERN AVE.  
CHICAGO, IL 60643-3135  
800-235-1782  
FAX 773-779-0231

## KW-5000G



REF. #	NUMBER	PART NAME	LIST PRICE	QTY	REF. #	NUMBER	PART NAME	LIST PRICE	QTY
1	42080	HANDLE C.P.		1	27-1	SP5X10	PIN		2
2	32117D	THROTTLE LEVER		1	28	0550021	ROTOR		1
2-1	G4X28	PIN		1	29	0550022	ROTOR BLADE		6
2-2	G4X22	PIN		1	30	550023	FRONT END PLATE		1
3	0345290	INLET BUSHING		1	31	6206ZZ	BALL BEARING		1
5	M5X12	BOLT		4	32	0550181	MOTOR CASE C.P. (5000G)		1
6	P-16	"O" RING		1	32-1	6D	STEEL BALL		1
7	42013	THROTTLE VALVE PIN		1	32-2	0132991	KNOCK SPRING		1
8	5/8ID	THROTTLE VALVE		1	33	S-110	"O" RING		1
9	S12X26X0.8	THROTTLE VALVE SPRING		1	34	0550026	HAMMER WHEEL		1
10	P-20	"O" RING		1	35	0550050	RETAINER		1
10-1	P-28	"O" RING		1	36	0550030	ANVIL		1
11	A-105	PLUG		1	37	0550028	ANVIL PIECE		1
12	0442313	REGULATOR VALVE		1	38	0550027	CAM		1
12-1	P-14	"O" RING		1	39	0550051	PLUNGER A		1
13	S-25	"O" RING		1	40	0550053	SPRING (5000G)		1
14	0442350	REGULATING CAP		1	41	0550052	PLUNGER B		1
14-1	RTW-25	RETAINER		1	42	0550029	BUSHING		1
14-2	04423501	REGULATING CAP LOCK		1	44	0142071	RUBBER PROTECTOR		1
14-3	ZO3210	RETAINER		1	45	0550182	IMPACT HOUSING C.P.		1
15	0442314	REGULATING VALB KNOB		1	45-1	M6X7	GREASE SCREW		1
15-1	SP3X22	SPRING PIN		1	45-2	ZO996	TOOTHED LOCK WASHER		1
16	4D	STEEL BALL		1	45-3	P-6	"O" RING		1
17	S3.8X10X0.5	KNOCK SPRING		1	46	M8N	LOCK NUT		4
18	42015	REVERSING VALVE		1	47	M8W	WASHER		4
18-1	S-18	"O" RING		1	48	M8X45	BOLT		4
19	ZO3121	RETAINER		1	49	0132987	DEAD HANDLE C.P.		1
20	0132915	REVERSE LEVER		1	51	M6X16	BOLT		4
21	M4X12	SCREW		1	52	P-50	"O" RING		1
	M8X22	BOLT		4			<b>PART FOR INSIDE HANDLE C.P.</b>		
24	45206	MOTOR HOUSING GASKET		1	53A	0550180BNS	HANDLE C.P. (NPT)		1
25	6205ZZ	BALL BEARING		1	54	0345417	THROTTLE LEVER		1
26	32124	REAR END PLATE		1	55A	0132919NiS	INLET BUSHING (NPT)		1
26-1	SP5X10	PIN		1	57	0550113BT	THROTTLE LEVER PIN		1
27	40120	CYLINDER		1					