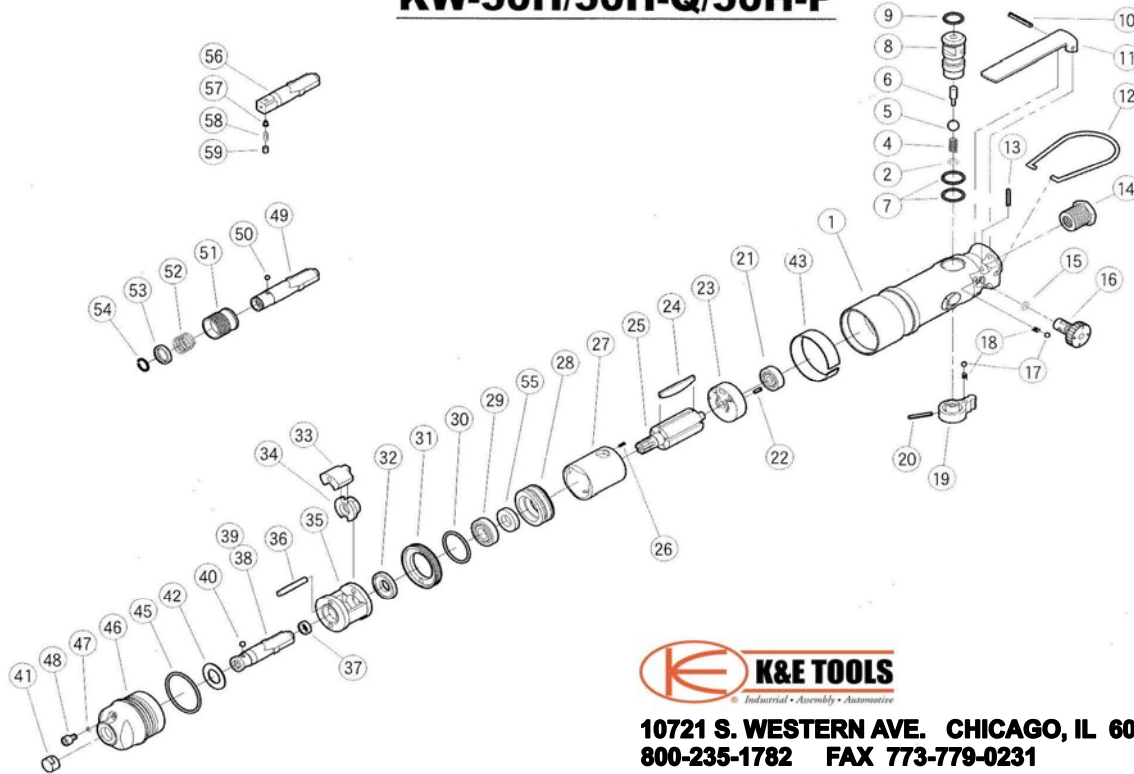


EXPLODED VIEW

KW-50H/50H-Q/50H-P



10721 S. WESTERN AVE. CHICAGO, IL 60643
800-235-1782 FAX 773-779-0231

REPAIR PART LIST

REF. #	NUMBER	PART NAME	QTY	REF. #	NUMBER	PART NAME	QTY
1	0205201	MOTOR CASE C.P.	1	31	0205235	LOCK NUT	1
2	S-10	O RING	1	32	0205225	SPACER	1
				33	0205228	HAMMER	2
4	0205191	THROTTLE SPRING	1	34	0205227A	CAM	1
5	5/16ID	THROTTLE VALVE BALL	1	35	0205226	IMPACT CAGE	1
6	0205213	THROTTLE VALVE PIN	1	36	HP4X278	HAMMER PIN	2
7	S-16	O RING	2	37	02052322	THRUST RING	1
8	0205215	REVERSING VALVE	1	38	0205230A	INTERNAL HEX ANVIL	1
9	S-14	O RING	1				
10	SP3X22	PIN	1	40	3.5D	STEEL BALL	1
11	0205212	THROTTLE LEVER	1	41	0205243A	RETAINER RING	1
12	0805217	HANGER	1	42	0205232	THRUST RING	1
13	SP5X14	PIN	1	43	0205239	EXHAUST COVER	1
14	2263142	INLET BUSHING	1				
15	S-6	O RING	1	45	S-32	O RING	1
16	0516017B	REGULATING VALVE	1	46	0205282	IMPACT HOUSING CP	1
17	4D	STEEL BALL	2	47	SS-35	O RING	1
18	0114194	KNOCK SPRING	2	48	M4X6	BOLT	1
19	0205216	REVERSING LEVER	1	49	0205230AC9	QUICK CHUCK ANVIL	1
20	SP5X18	PIN	1	50	1/8D	STEEL BALL	1
21	626Z	BEARING	1	51	0207043	BALL STOPPER	1
22	SP5X8	PIN	1	52	02054302	BALL STOPPER SPRING	1
23	0205224	REAR END PLATE	1	53	02054303	SPRING STOPPER	1
24	0205222	ROTOR BLADE	5	54	826H60	RETAINER RING	1
25	0205221	ROTOR	1	55	810194	OIL SEAL	1
26	SP6X5	PIN	1	56	02052842AP	PIN ANVIL	1
27	0205220	CYLINDER	1	57	02061921	PIN	1
28	0205223	FRONT END PLATE	1	58	0206193	SPRING	1
29	EE-3	BALL BEARING	1	59	0206194	RETAINER	1
30	S-26	O RING	1	60	812183	OIL SEAL FOR MOTOR CASE	1