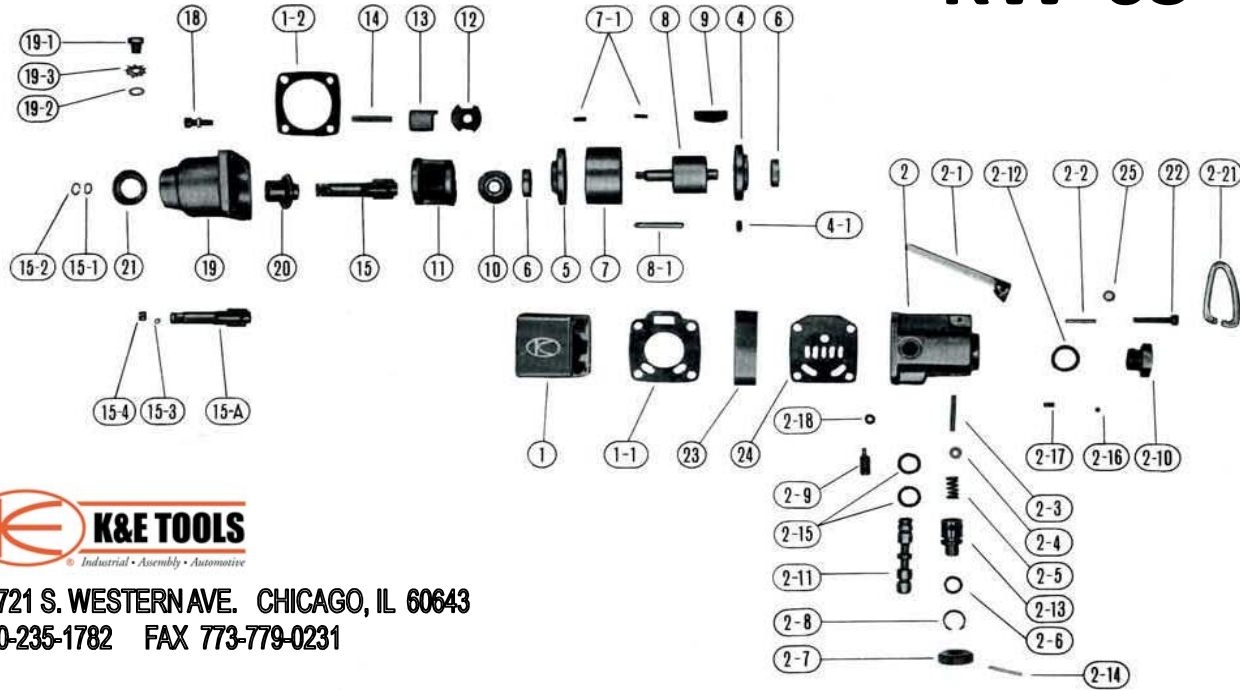


EXPLODED VIEW

KW-6S



10721 S. WESTERN AVE. CHICAGO, IL 60643
800-235-1782 FAX 773-779-0231

REF. #	NUMBER	PART NAME	QTY	REF. #	NUMBER	PART NAME	QTY
1	6101	MOTOR CASE C.P.	1	7	6120	CYLINDER	1
1-1	8106	MOTOR CASING GASKET	1	7-1	SP3X8	CYLINDER PIN	2
1-2	8107	IMPACT HOUSING GASKET	1	8	6121	ROTOR	1
2	6160	BACKHEAD	1	9	6122	ROTOR BLADE	5
2-1	6154	THROTTLE LEVER	1	10	8125	SPACER	1
2-2	E3X22	THROTTLE LEVER PIN	1	11	6126A	IMPACT CAGE	1
2-3	6141	THROTTLE VALVE PIN	1	12	6127	CAM	1
2-4	3/8ID	THROTTLE VALVE BALL	11	13	6128A	HAMMER	2
2-5	S9.6X16x0.8	THROTTLE VALVE SPRING	1	14	6129A	HAMMER PIN	2
2-6	P-12	O RING	1	15	6130	SQ. DR. SPINDLE	1
2-7	6168	REGULATING VALVE KNOB	1		6230	SPINDLE	1
2-8	IRTW-16	RETAINER RING	1	15-1	P-4	O RING	1
2-9	6171	VALVE STOP SCREW	1	15-2	8132	RETAINER RING	1
2-10	6242	INLET BUSHING	1	15-3	3D	STEEL BALL	1
2-11	6165A	REVERSING VALVE	1	15-4	6230-1	RETAINER RING	1
2-12	P-16	O RING	1	18	M5X15	FRONT HOUSING BOLT	4
2-13	6187	REGULATING VALVE	1	18-1	M5W	WASHER	1
2-14	SP2.5X22	PIN	1	19	8102	IMPACT HOUSING	1
2-15	P-10	PIN	2	19-1	SPEC.M6X5	GREASE SCREW	1
2-16	4D	STEEL BALL	1	19-2	P-6	O RING	1
2-17	S3.8X12X0.5	SPRING	1	19-3	M6W	WASHER	1
2-18	P-3	O RING	1	20	8133	SPINDLE BUSHING	1
2-19	P-7	O RING	1	21	V13254	OIL SEAL	1
4	8124	REAR END PLATE	1	22	M5X28	REAR BOLT	4
4-1	SP3X8	PIN	1	23	6169	CIRCUIT BOARD	1
5	8123	FRONT END PLATE	1	24	6170	CIRCUIT GASKET	1
6	EE-3	REAR & FRONT BEARING	2	25	M5W	WASHER	4